



Anthony Beverley
Chair of the Board

**Annual
Meeting
2024**

WELCOME TO THE 2024 ANNUAL MEETING.





Anthony Beverley
Chair of the Board

Agenda

Annual
Meeting
2024

AGENDA

01. BOARD PRESENTATION
02. MANAGEMENT TEAM PRESENTATION
03. SHAREHOLDER DISCUSSION
04. ORDINARY RESOLUTIONS
05. GENERAL BUSINESS



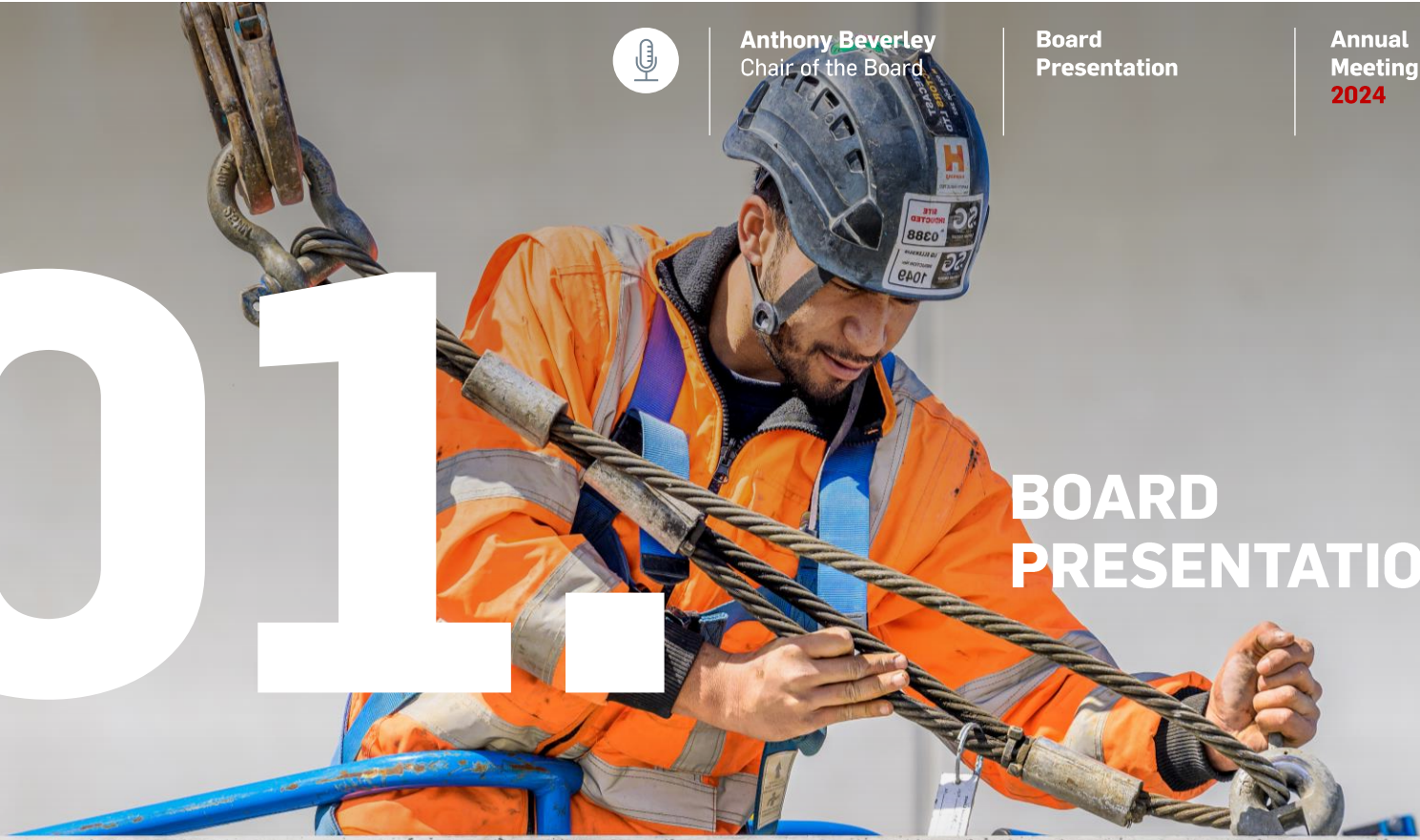
Anthony Beverley
Chair of the Board

**Board
Presentation**

**Annual
Meeting
2024**

01

**BOARD
PRESENTATION**





INTRODUCTIONS



Anthony Beverley
Board Chair
Independent Director



Dean Bracewell
Independent Director



Simon Woodhams
Chief Executive
Officer



David Thomson
Independent Director



Jeremy Simpson
Independent Director



Angela Bull
Independent Director



Carolyn Steele
Independent Director



Craig Peirce
Chief Finance and
Operating Officer



BOARD CHANGES



01. **Jeremy Simpson** appointed as Independent Director.



02. **Greg Reidy** retires from the Board.



BOARD CHANGES



03. **Dean Bracewell** steps down as People Committee Chair.



04. **David Thomson** is appointed as People Committee Chair.



Anthony Beverley
Chair of the Board

Board Changes

Annual Meeting
2024

Dean Bracewell
Independent Director

BOARD CHANGES



05.

Anthony Beverley steps down as Chair of PFI's Board. He remains on the Board as Independent Director.



06.

Dean Bracewell is appointed as Chair of PFI's Board.



Simon Woodhams
Chief Executive
Officer

Management
Team
Presentation

Annual
Meeting
2024

02.

MANAGEMENT TEAM PRESENTATION



RESILIENT WELL LOCATED



PORTFOLIO OF SCALE

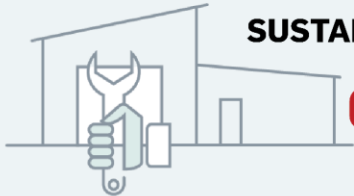
PORTFOLIO UNDER RENTED



GREENSTAR DEVELOPMENT



PIPELINE EXPANDED



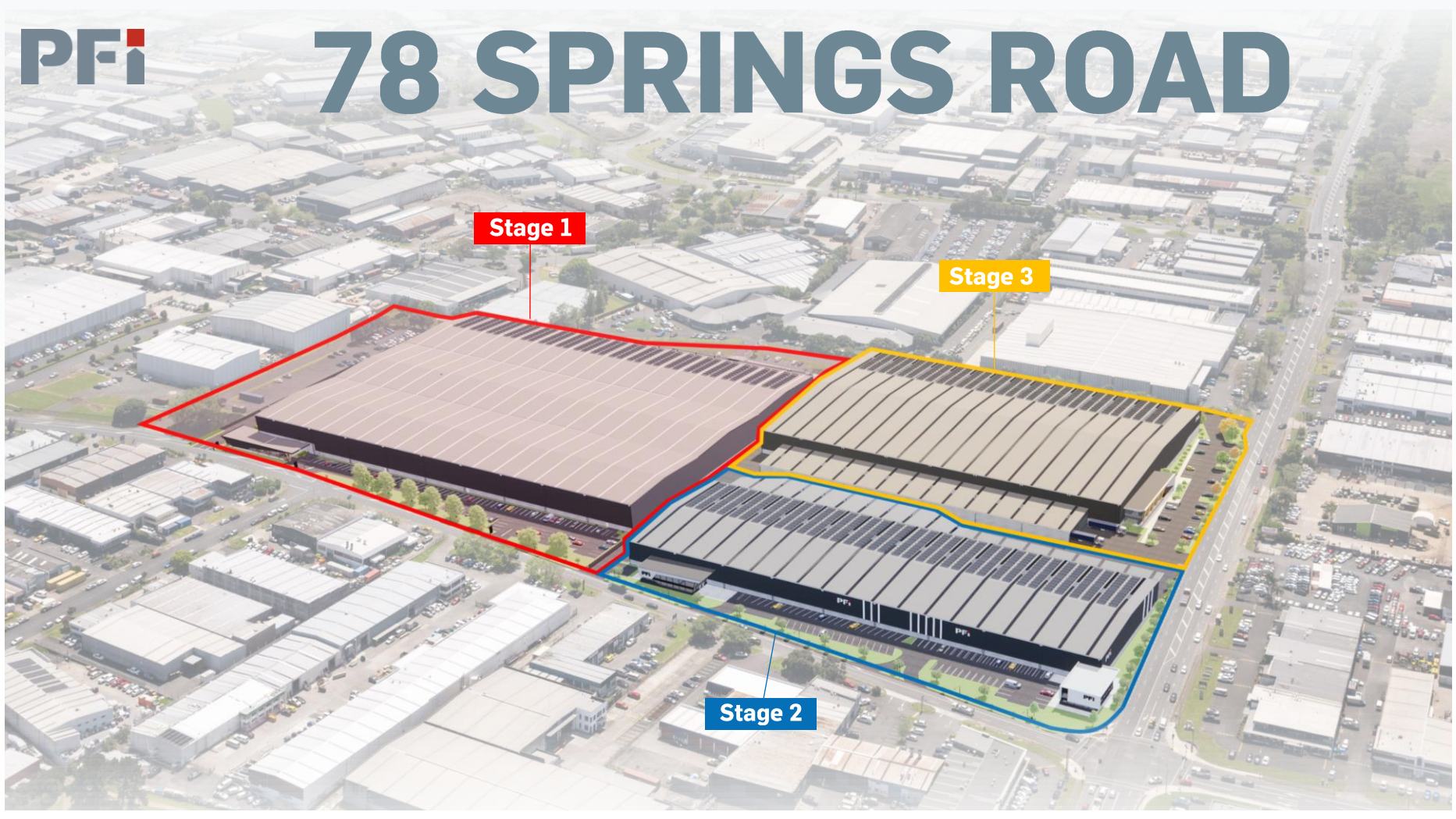
SUSTAINABILITY AT OUR CORE

GREEN FINANCE FRAMEWORK LAUNCHED





78 SPRINGS ROAD



Stage 1

Stage 3

Stage 2



78

SPRINGS ROAD,
EAST TAMAKI



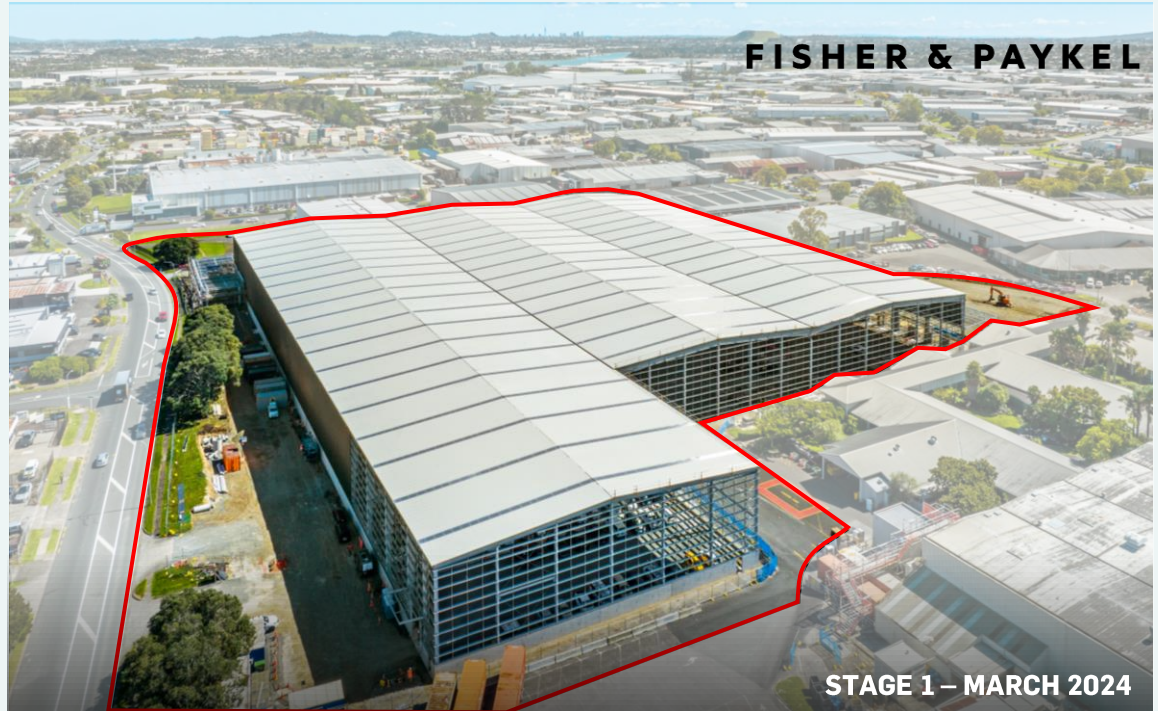
LEASE
FISHER & PAYKEL APPLIANCES
15 YEARS

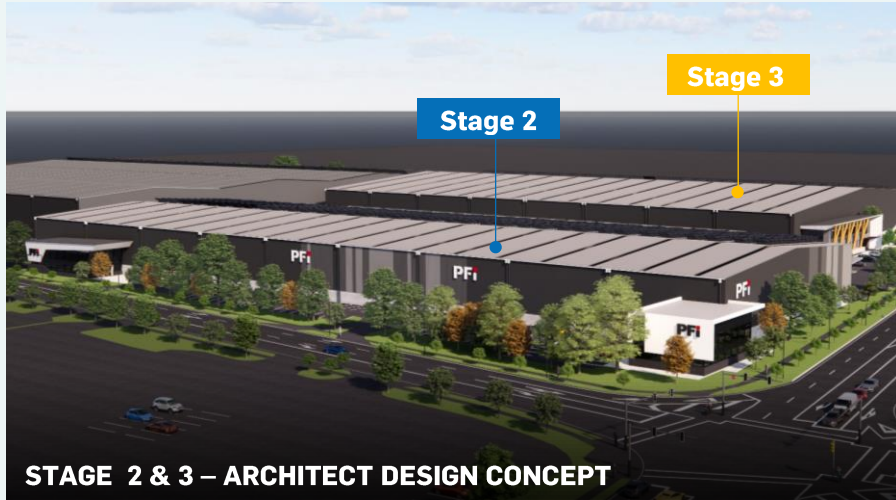


STAGE 1 - WAREHOUSE
25,500 SQM

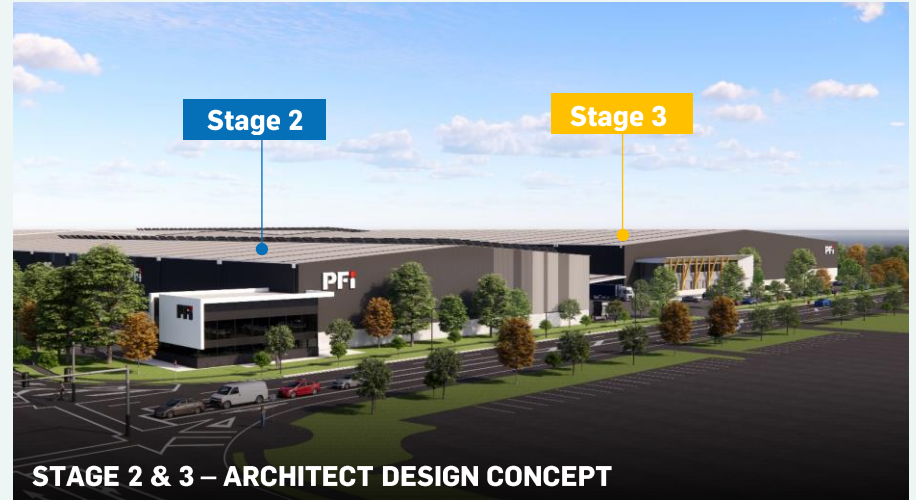


GREEN STAR TARGET





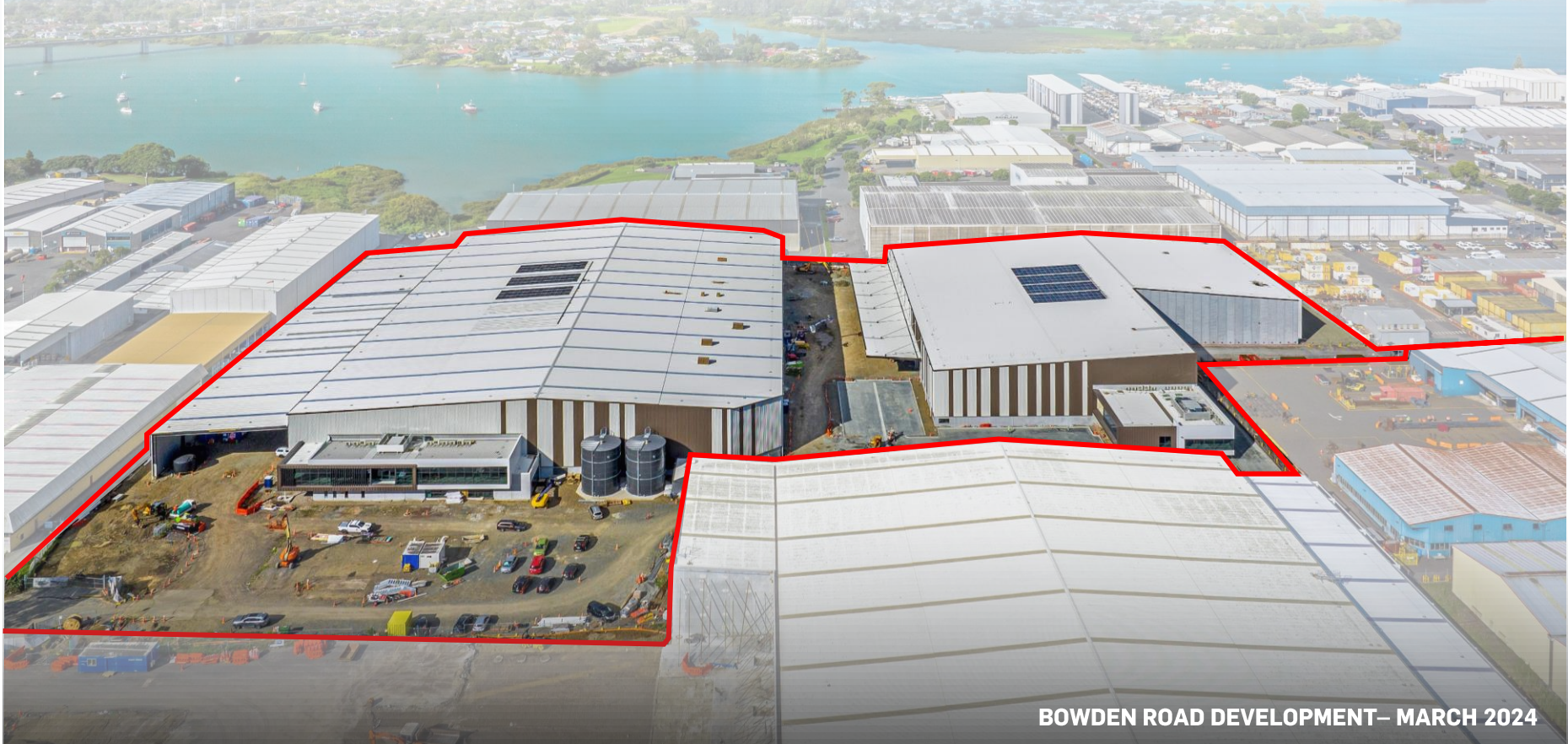
STAGE 2 & 3 – ARCHITECT DESIGN CONCEPT



STAGE 2 & 3 – ARCHITECT DESIGN CONCEPT

PFI

30-32 BOWDEN ROAD



BOWDEN ROAD DEVELOPMENT – MARCH 2024



30-32

**BOWDEN ROAD,
MT WELLINGTON**



LEASE – STAGE 1
TOKYO FOOD
12 YEARS



EST. COMPLETION DATE
07-24



GREEN STAR TARGET



STAGE 1 – TOKYO FOOD



30-32

**BOWDEN ROAD,
MT WELLINGTON**



**LEASE – STAGE 2
CURRENTLY UNDER
NEGOTIATION**



EST. COMPLETION DATE

07-24



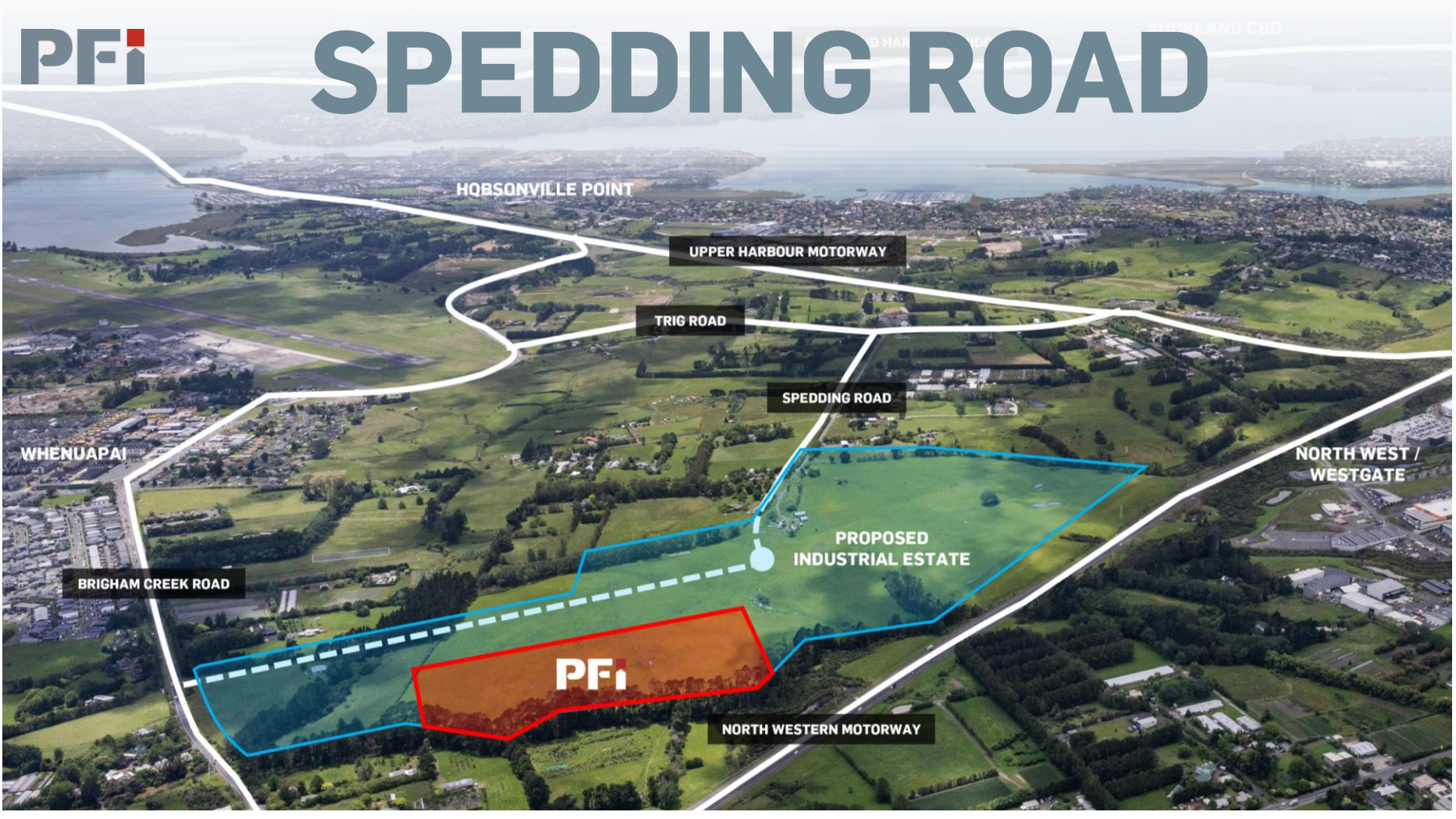
GREEN STAR TARGET



STAGE 2 – SPECULATIVE BUILD



SPEEDING ROAD



HOBSONVILLE POINT

UPPER HARBOUR MOTORWAY

TRIG ROAD

SPEEDING ROAD

WHENUAPAI

NORTH WEST / WESTGATE

BRIGHAM CREEK ROAD

PROPOSED INDUSTRIAL ESTATE



NORTH WESTERN MOTORWAY



MASTER PLAN – CONCEPT ONLY



ARCHITECT DESIGN CONCEPT – GROUND LEVEL

SPEEDING RD

INDUSTRIAL ESTATE,
WHENUAPAI



FULL SITE

5.8 HECATARES



EST. COMPLETION DATE

Q2-27



GREEN STAR TARGET





PREPARED for
economic challenges

Positioned for sustained
SUCCESS



Strong platform for
GROWTH

Long-term shareholder
RETURNS



Anthony Beverley
Chair of the Board

**Shareholder
Discussion**

**Annual
Meeting
2024**

03

**SHAREHOLDER
DISCUSSION**



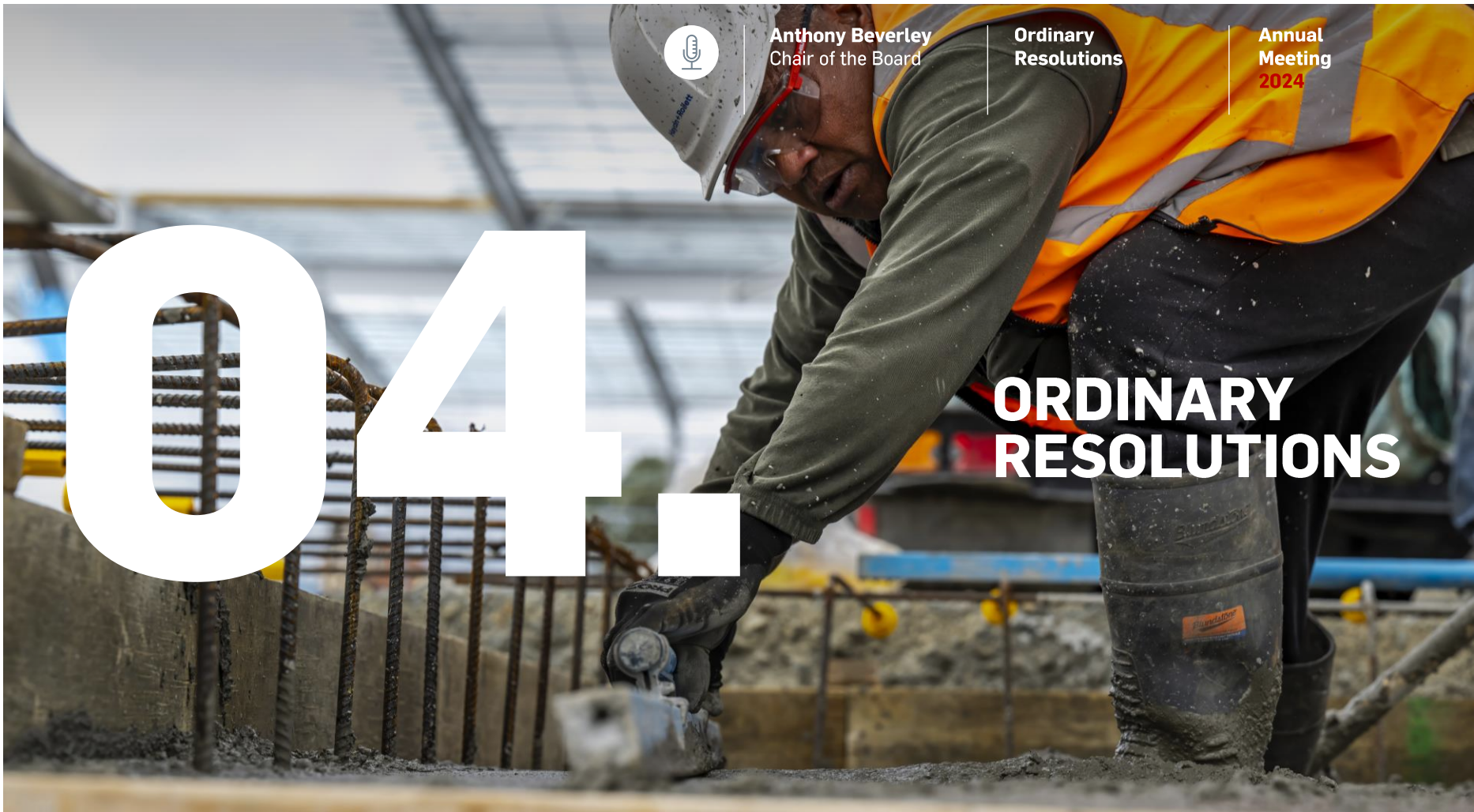
Anthony Beverley
Chair of the Board

**Ordinary
Resolutions**

**Annual
Meeting
2024**

04.

**ORDINARY
RESOLUTIONS**





RESOLUTION

01.

**That David Thomson, who
retires and is eligible for
election, be elected as a
Director of the Company.**





RESOLUTION

02.

**That Jeremy Simpson
(appointed by the Board as a
Director on 27 February 2024),
who retires and is eligible for
election, be elected as a
Director of the Company.**





RESOLUTION

03.

**That the Directors are
authorised to fix the fees and
expenses of the auditors,
PricewaterhouseCoopers
Auckland.**





Anthony Beverley
Chair of the Board

General Business

Annual Meeting
2024

05

**GENERAL
BUSINESS**





Anthony Beverley
Chair of the Board

Close of Meeting

Annual Meeting
2024

THANK YOU
FOR ATTENDING



The information included in this presentation is provided as at 3 April 2024.

Property for Industry Limited (PFI) does not guarantee the repayment of capital or the performance referred to in this presentation.

Past performance is not a reliable indicator of future performance.

The presentation includes a number of forward looking statements. Forward looking statements, by their nature, involve inherent risks and uncertainties. Many of those risks and uncertainties are matters which are beyond PFI's control and could cause actual results to differ from those predicted. Variations could either be materially positive or materially negative.

While every care has been taken in the preparation of this presentation, PFI makes no representation or warranty as to the accuracy or completeness of any statement in it including, without limitation, any forecasts.

This presentation has been prepared for the purpose of providing general information, without taking account of any particular investor's objectives, financial situation or needs. An investor should, before making any investment decisions, consider the appropriateness of the information in this presentation, and seek professional advice, having regard to the investor's objectives, financial situation and needs.

This presentation is solely for the use of the party to whom it is provided.